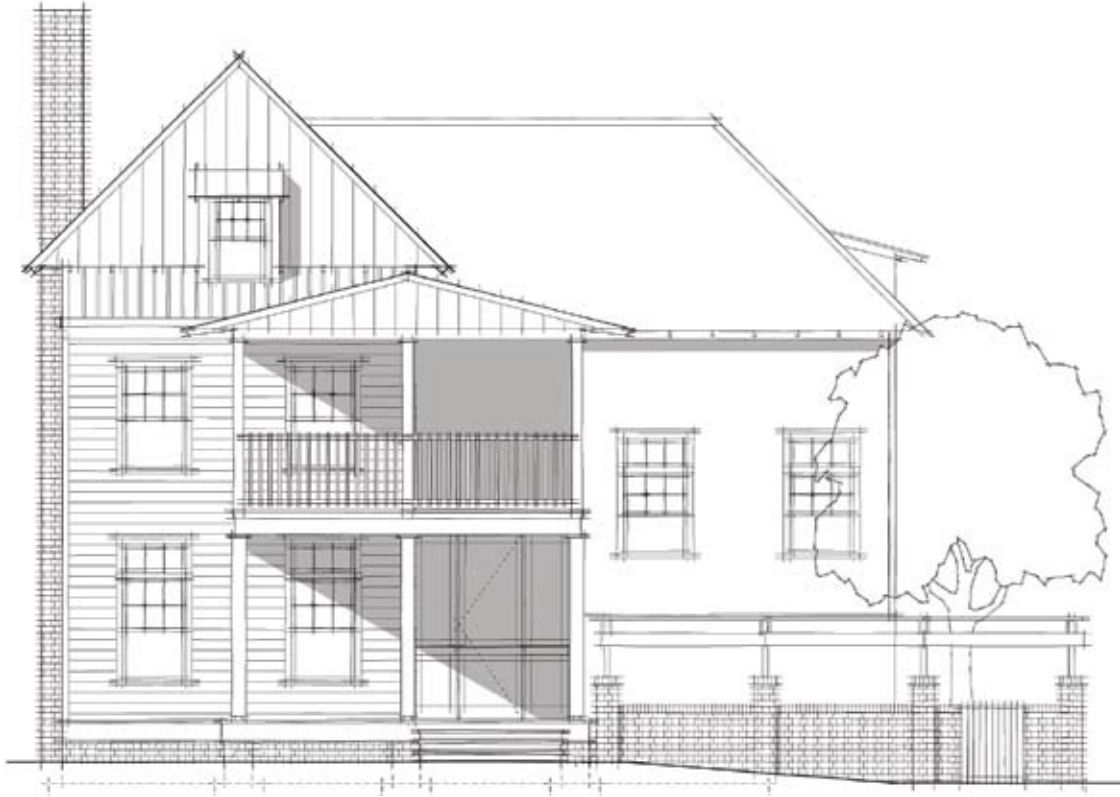




TRUSSVILLE SPRINGS

COURTYARD HOMES

WILLOW



FRONT ELEVATION



FRONT SIDE ELEVATION

FEATURES

- 3 Bedroom 2½ Bath
- Private Master suite ½ level up
- Side garden space for outdoor living
- Open floor plan with 9' ceilings on main level
- Sleeping porch off 2nd floor
- Bonus home office above Mbr
- TV room on 2nd floor
- 2 car garage

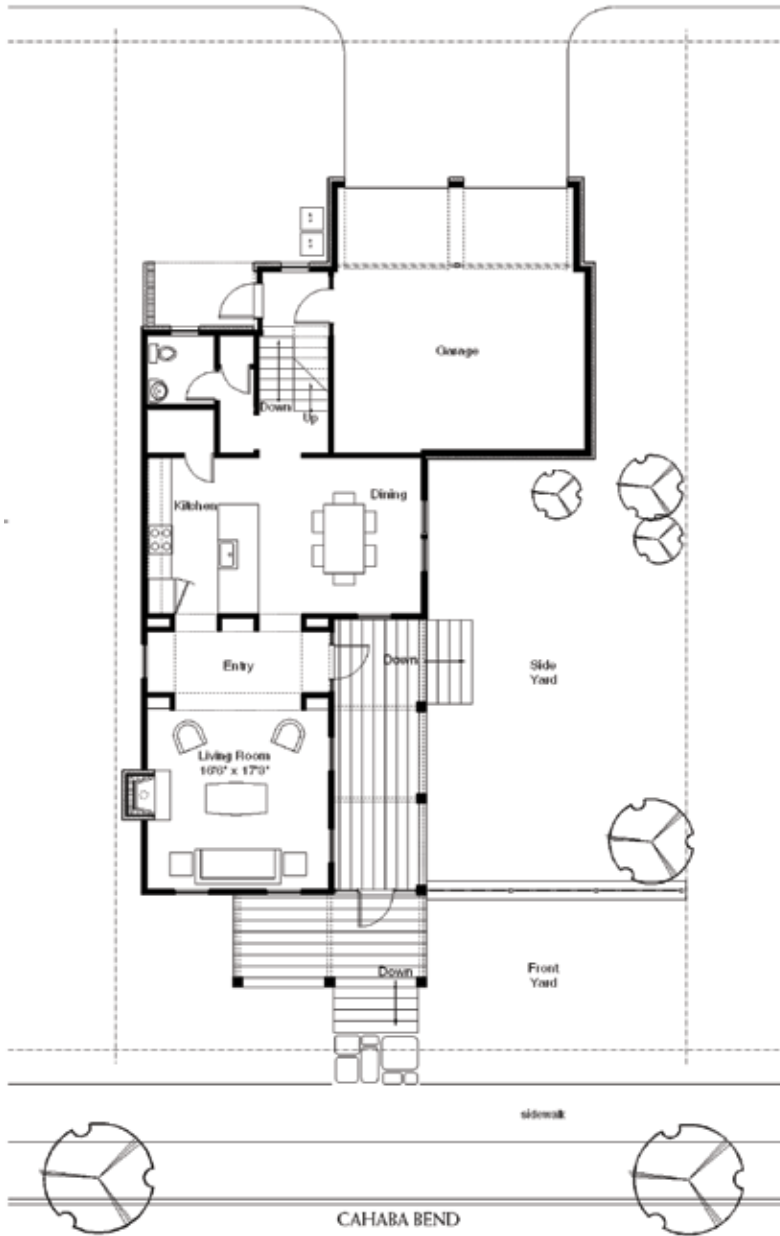
The creation of Trussville Springs is an organic and ongoing process. The community site plan, amenities, housing types, plans and features, prices and other details are conceptual and as such are subject to change. Changes may occur without prior notice and may be substantive. Illustrations are artist's interpretations and may differ from completed improvements. No specific amenities or other features need be built. This is not an offer or solicitation in any state where prohibited by law.



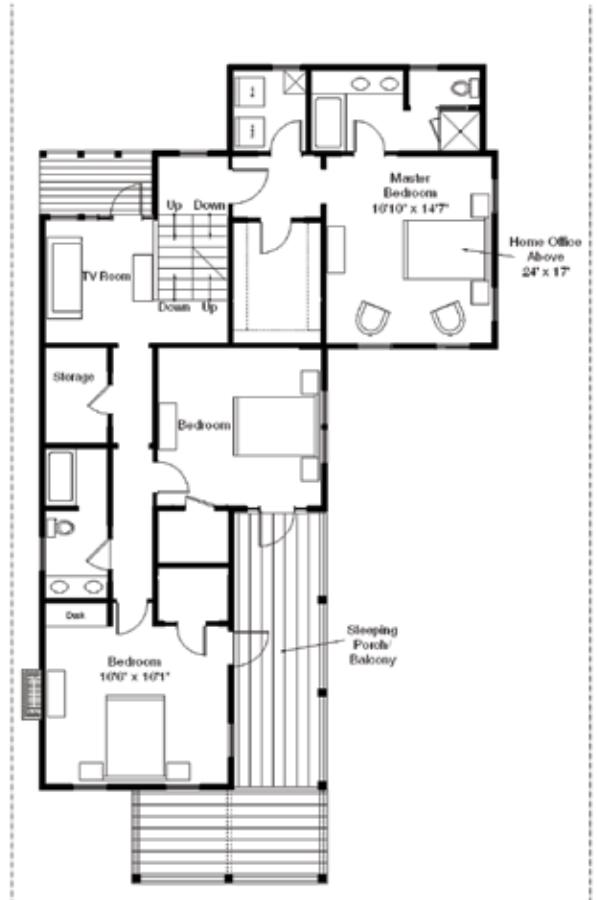


TRUSSVILLE
SPRINGS

WILLOW



MAIN FLOOR PLAN



SECOND FLOOR PLAN

DETAILS

Conditioned Space	2456 Square Feet
Porches	700 Square Feet
Total	3156 Square Feet

The creation of Trussville Springs is an organic and ongoing process. The community site plan, amenities, housing types, plans and features, prices and other details are conceptual and as such are subject to change. Changes may occur without prior notice and may be substantive. Illustrations are artist's interpretations and may differ from completed improvements. No specific amenities or other features need be built. This is not an offer or solicitation in any state where prohibited by law.

