



## TRUSSVILLE SPRINGS



### THE VERDIER

3 BEDROOM 2 1/2 BATH  
1824 HEATED SQUARE FEET  
200 SQUARE FEET OF PORCHES  
160 SQUARE FEET OF DECK

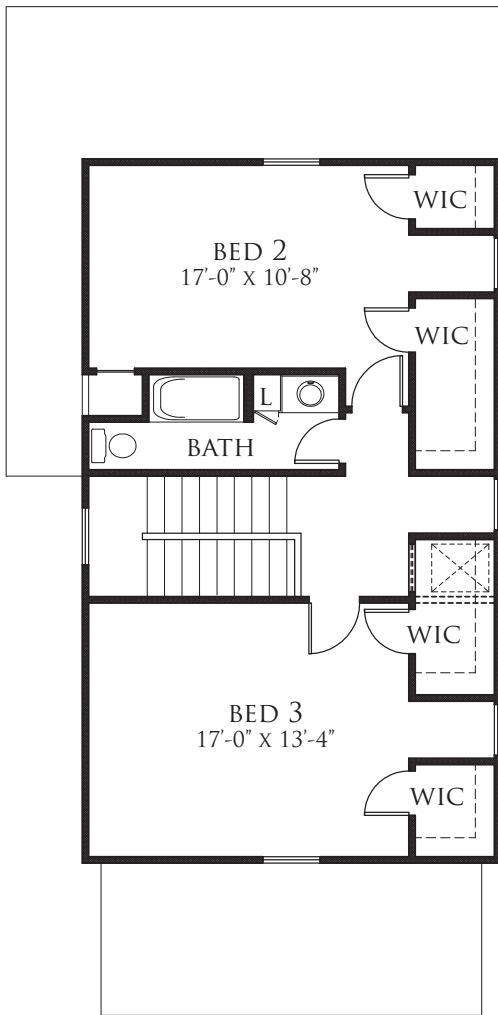


ALLISON RAMSEY  
*Architects Inc.* creating sustainable timeless design

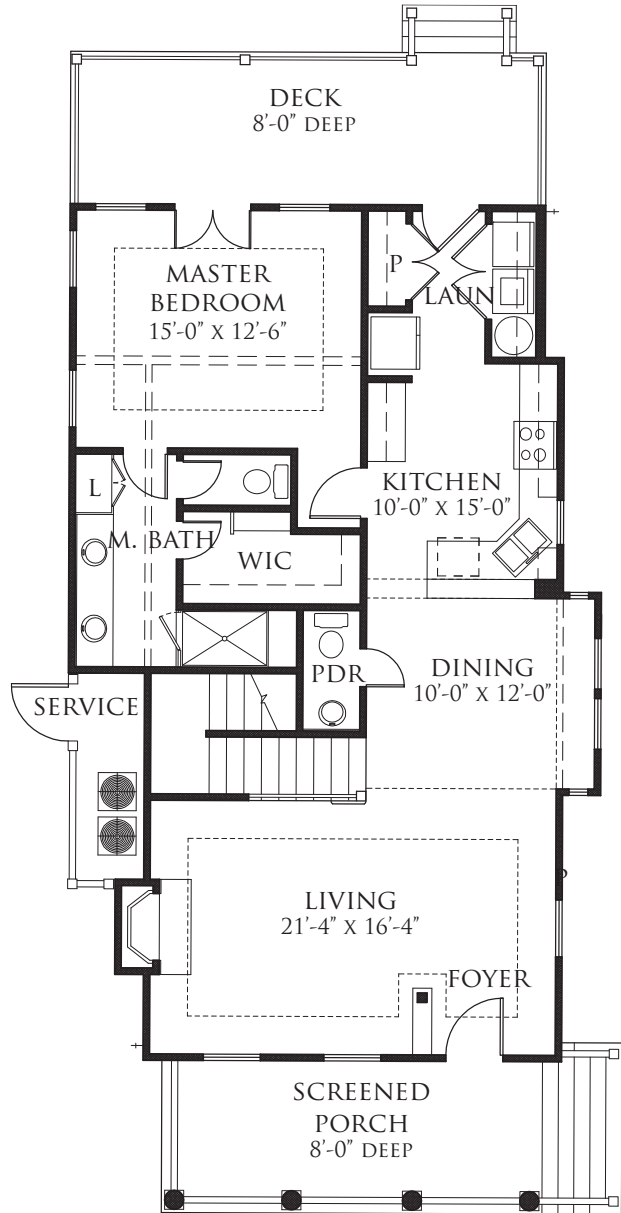


# TRUSSVILLE SPRINGS

## THE VERDIER 28'-0" WIDE X 61'-10" LONG



SECOND FLOOR PLAN  
724 HEATED SQUARE FEET



FIRST FLOOR PLAN  
1110 HEATED SQUARE FEET

**ARA**  
**ALLISON RAMSEY**  
*Architects Inc.* creating sustainable timeless design