



## TRUSSVILLE SPRINGS

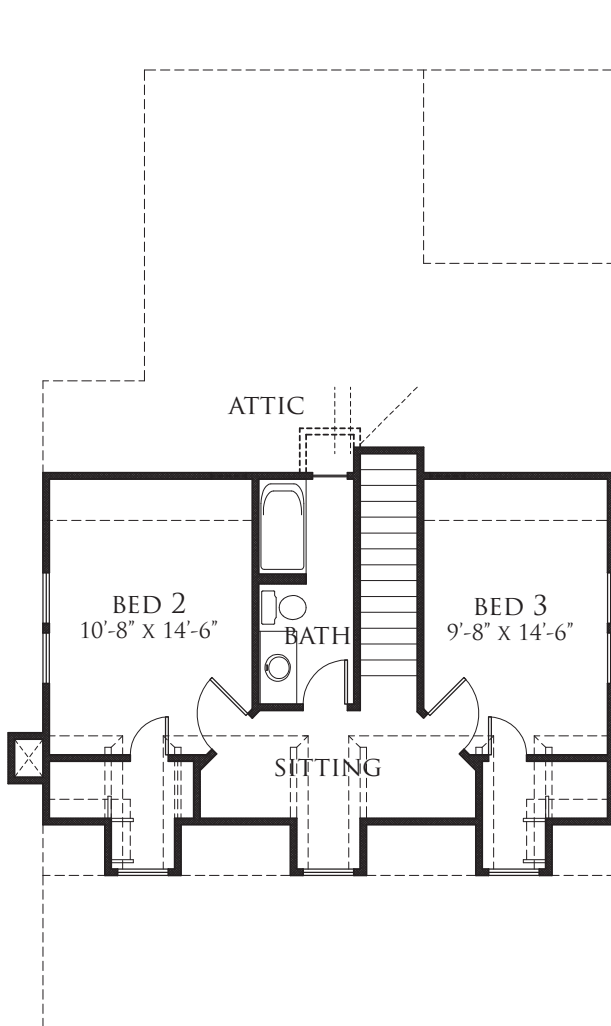


**THE VALLEY FARM**  
3 BEDROOM 2 1/2 BATH  
1645 HEATED SQUARE FEET  
348 SQUARE FEET OF PORCHES

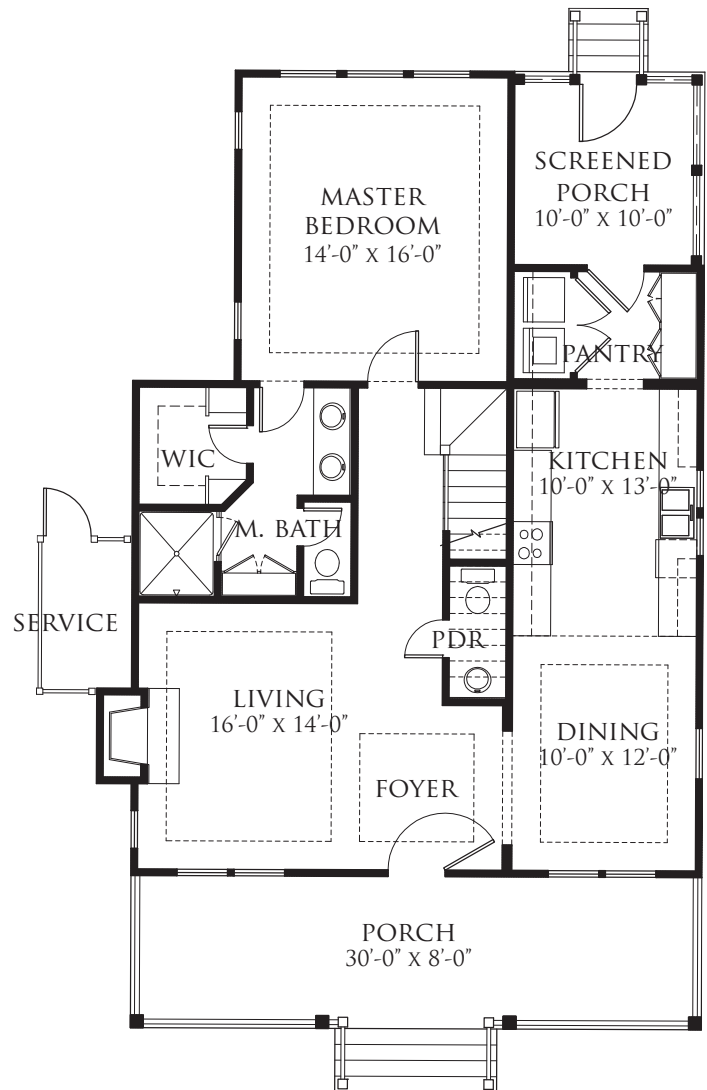
**ARA**  
**ALLISON RAMSEY**  
*Architects Inc.* creating sustainable timeless design



## TRUSSVILLE SPRINGS



**SECOND FLOOR PLAN**  
555 HEATED SQUARE FEET



**FIRST FLOOR PLAN**  
1090 HEATED SQUARE FEET

### THE VALLEY FARM

31'-10" WIDE X 50'-4" LONG

**ARA**  
**ALLISON RAMSEY**  
*Architects Inc.* creating sustainable timeless design