



TRUSSVILLE
SPRINGS

COURTYARD HOMES

MAGNOLIA



FRONT ELEVATION



FRONT SIDE ELEVATION

FEATURES

- 3 Bedroom 2½ Bath
- Master bedroom on main level
- 2 bedrooms upstairs with Jack-n-Jill bath
- Open floor plan with 9' ceilings on main level
- 2 car attached garage
- Covered front porch
- Enclosed Gallery facing courtyard
- Courtyard space for outdoor living

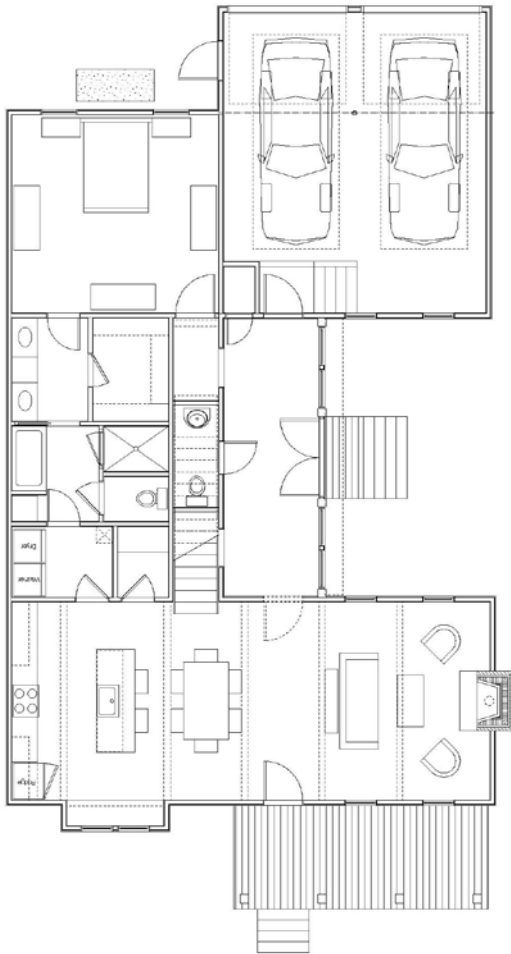
The creation of Trussville Springs is an organic and ongoing process. The community site plan, amenities, housing types, plans and features, prices and other details are conceptual and as such are subject to change. Changes may occur without prior notice and may be substantive. Illustrations are artist's interpretations and may differ from completed improvements. No specific amenities or other features need be built. This is not an offer or solicitation in any state where prohibited by law.





TRUSSVILLE
SPRINGS

MAGNOLIA



MAIN FLOOR PLAN



SECOND FLOOR PLAN

The creation of Trussville Springs is an organic and ongoing process. The community site plan, amenities, housing types, plans and features, prices and other details are conceptual and as such are subject to change. Changes may occur without prior notice and may be substantive. Illustrations are artist's interpretations and may differ from completed improvements. No specific amenities or other features need be built. This is not an offer or solicitation in any state where prohibited by law.

