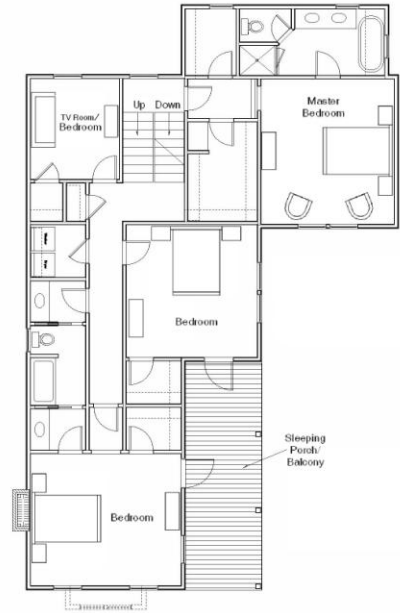
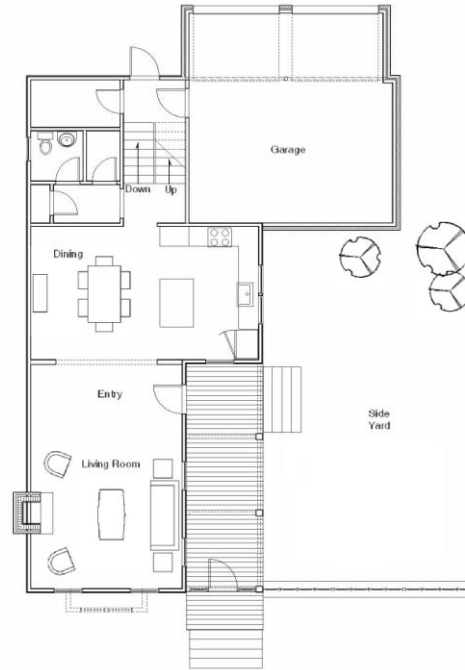


DETAILS

:: CONDITIONED SPACE	2477 S.F.
:: PORCHES	512 S.F.
:: TOTAL	2912 S.F.



FEATURES

- :: 3 bedrooms and 2.5 baths
- :: Private Master Suite ½ level up
- :: Side garden space for outdoor living
- :: Covered Front Porch
- :: Sleeping porch on second floor
- :: Open floor plan w/9' ceilings on main level
- :: TV room on 2nd Floor
- :: 2 car garage

TRUSSVILLE SPRINGS

Courtyard Home Plan :: Cypress ::

The creation of Trussville Springs is an organic and ongoing process. The community site plan, amenities, housing types, plans and features, prices and other details are conceptual and as such are subject to change. Changes may occur without prior notice and may be substantive. Illustrations are artist's interpretations and may differ from completed improvements. No specific amenities or other community features need be built. This is not an offer or solicitation in any state where prohibited by law.

